

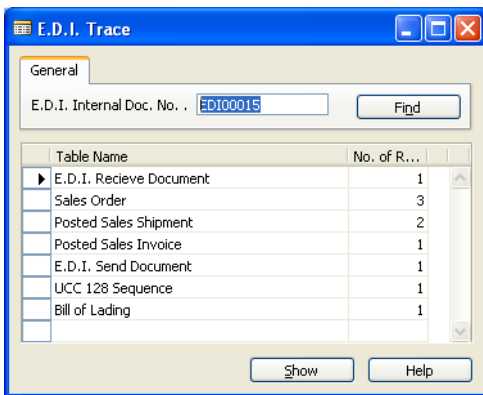
EDI

Electronic Data Interchange (EDI)

The EDI granules include a logical mapping tool built inside Microsoft Dynamics NAV to allow the seamless mapping of EDI transactions with the business system.

Historically EDI translation has been handled outside the business system, leaving the final linkage into the business system database to programmers, hard coded programs, or even manual entry. The Lanham EDI granules take a new approach by incorporating the mapping and cross reference process inside the business system. This provides a single mapping process between the EDI segments and elements and the business system database.

In addition the EDI granule provides a thorough workflow process, tying the incoming or outgoing EDI document to the business transaction. This allows the user to drill down from a business document or EDI document to the related transactions.



Total Access to Data

The EDI Trace window shows an example of all transactions that were created and associated with an incoming 850 Purchase Order. The user can then drill down to view any document or transaction.

EDI Standards

The EDI granules fully support both the X12 and EDIFACT standards. In fact, both standards are often supported within a single transmission to or from a Value Added Network (VAN).

In addition to these standards, each industry has added their own specific requirements to support their business transactions. Today the EDI granules are operating across all these standards.

Cross Reference Engine

Often the most difficult part of the EDI translation process is the cross referencing of incoming data to the business system data. For example, a trading partner typically orders an inventory item using one of several numbers, none of which may be the number you use to identify the item in your system. Because the EDI granule is built inside Dynamics NAV, it handles the cross referencing and mapping in a single step.

The EDI granules handle cross referencing of Items, Units of Measure, Sell-To, Ship-To, Ship-For, and Distribution Centers.

Specific EDI Requirements

Several industries have specific requirements for their industries that are also supported by the EDI granule.

Retail Compliance – Total retail compliance required by large Retail Chains is accomplished by using the EDI granules in conjunction with E-Ship.

Automotive – The forecast and release process is typically required by automotive manufacturers ordering products for an assembly line. The EDI Granules handle the receipt of a forecast, release against the forecast and cumulative total reporting.

Fashion – The Bulk Draw Down process is supported for the Fashion industry, allowing orders to be associated with blanket orders representing the total season commitment by a customer.

Built Inside Microsoft® Dynamics™ NAV

Perhaps the most important part of an EDI solution is the integration with your internal business processes, yet many companies use a number of software packages, often not integrated, to accomplish this task.

EDI and E-Ship, both built inside Dynamics NAV, take a unique approach of embedding all these functions inside a single system, providing "Total Access to Data." From the incoming EDI Order, to shipment, Advanced Shipment Notice (ASN), and invoice, the user has a common user interface and access to all the details that make up the day-to-day operation.

Increased Customer Satisfaction

With superior visibility to real-time information, EDI provides you the tools necessary to automate and streamline your business processes, which enable you to respond to your customer demands on the fly, and with accurate information.

Respond Quickly to Changing Requirements

Whether setting up a new Trading Partner or responding to changes with an existing one, the EDI granule provides you the tools to quickly and efficiently comply with your customer's or vendor's changing requirements.

Key EDI Benefits:

- EDI's mapping and translation tool maps EDI elements directly to the database fields.
- Packaged EDI maps available for major trading partners.
- Extensive Cross Reference Engine for customer, distribution center, store, item and unit of measure definition.

Combine EDI and E-Ship

- All granules and functions embedded into a single Supply Chain system providing "Total Access to Data."
- Pack Line Scanning and Standard Pack capture package level detail for the Advanced Shipment Notice.
- Bill of Lading for planning and executing shipments.
- Label Formatter for UCC compliance labels and custom formatting.

Related Fact Sheets

- E-Ship
- Advanced Forecasting and Procurement

Configuration

The following granules can be purchased through your reseller from Microsoft:

Granule Description	Granule Number
EDI Standard Required	14000360
EDI Extended Doc. Handling	14000380
EDI Packaged Maps Basic Required for Lanham Mapping Services	14000910

About the Developer

Lanham Associates began its relationship with Navision in 1997 by creating the product's first distribution functionality, Advanced Distribution. A Gold-Certified MBS ISV, Lanham Associates, has been creating complementary supply chain planning and execution products inside Dynamics NAV ever since.

Current products include Retail Supplier Link (RSL), EDI, Automotive Supplier Link (ASL), E-Ship, E-Receive, Advanced Forecasting and Procurement (AFP), ADCS Warehousing, Credit Card Processing, History & Security Management.

Lanham Associates maintains high standards for product excellence, and has been the recipient of both the President's Club and Inner Circle Awards many times since being affiliated with Microsoft, as well as was awarded Microsoft's 2006 NAV Partner of the Year.

The company's products are available through their extensive channel of Microsoft Business Solutions resellers.

Contact Information

For more information contact your local Microsoft Business Solutions reseller or contact:

Lanham Associates, Headquarters

1 Meca Way
Norcross, GA 30093 USA
Voice: +1-678-379-4200, ext 102
E-Mail: sales@lanhamassoc.com

Lanham Associates, EMEA

Bedrijvenpark Twente 305
7602 KL Almelo, Netherlands
Voice: +31 (0)10 7994145
E-Mail: sales@lanhamassoc.com

More information is available on this and other products at www.lanhamassoc.com.