

# Inventory Management

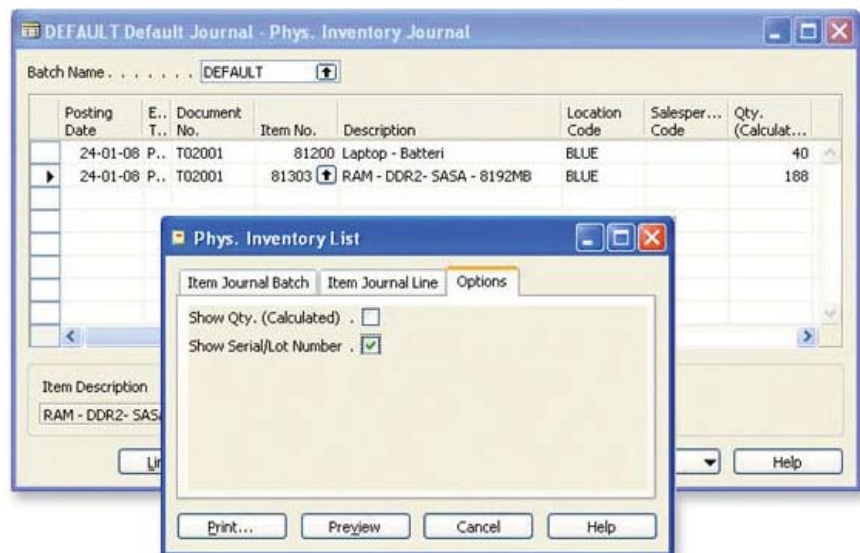
## Inventory Management in Microsoft Dynamics NAV

### BENEFITS:

- **Help reduce purchasing and inventory costs.** Connect inventory control, purchasing, and sales order processing with demand planning and help reduce costs, improve cash flow, and help ensure that you have the right stock available when you need it.
- **Gain visibility into inventory processes.** Effectively balance availability with demand and track items and their possible expiration dates throughout the supply chain to help minimize on-hand inventory, optimize replenishment, and increase warehouse efficiency.
- **Improve customer satisfaction.** Make more accurate order promises and intelligent last-minute exceptions with access to up-to-date inventory information. Respond quickly and knowledgeably to customer queries for improved customer service.
- **Reduce time to market.** With integrated order, inventory, and distribution processes, as well as item tracking capabilities, your business can reduce manual data entry and get your goods to market fast.

**Tighten inventory management processes to help increase operational efficiency across your business, improve customer service, and reduce inventory and distribution costs with Inventory Management in Microsoft Dynamics™ NAV.**

Increased automation and item tracking capabilities help you improve inventory accuracy and better match the goods you have on hand with customer demand.



*Quickly identify discrepancies in your inventory by comparing actual quantities with system records.*

## FEATURES:

<b>Inventory costing</b>	Understand item costs throughout your warehouse and production processes, including inventory, work-in-process (WIP), and cost of goods sold (COGS), to help efficiently manage sales and purchase prices and line discounts with customers and vendors. Break down costs according to categories such as materials, capacity, subcontracting, and overhead. Tighten control of closing processes, improve batch-job costing, and streamline reconciliation with the general ledger.
<b>Automated Data Collection System (ADCS)</b>	Help increase the accuracy and efficiency of your warehouse management—picking and putting away of items, physical inventory counts, and moving items from bin to bin—with ADCS.
<b>Radio frequency identification (RFID) enablement</b>	Comply more easily with customer or supply chain mandates for RFID.
<b>Order processing</b>	Provide customers with accurate item availability and deliver on time with support for available-to-promise (ATP) and capable-to-promise (CTP) insight.
<b>Returns management</b>	Process returned inventory and account for additional costs. Automatically organize credit memos, replacement goods, returns to vendors, and partial or combined return of shipments or receipts. Exact cost reversal helps increase inventory accuracy.
<b>Item tracking</b>	Trace lot or serial numbers to quickly determine where items were purchased, processed, or sold. Help eliminate waste due to expiration of goods with support for first expired/first out (FEFO) handling.
<b>Item substitution</b>	Offer customers alternative items when those they want are out of stock, or if the alternatives can be provided less expensively with a higher profit margin.
<b>Item cross-references</b>	Identify what your customers want by cross-referencing any customer code, internal code, or vendor code.
<b>Internal pick/put-away</b>	Pick or put away items and debit or credit inventory records independently of purchase receipts, sales, or other source documents to help maintain accurate inventory records even when you access items for testing, display purposes, or other internal or operational needs.
<b>Multiple locations and responsibility centers</b>	Provide customers who request non-stock items with immediate quotes. Automatically create non-stock items and process them in the same way you process stock items.
<b>Location transfers</b>	Manage items individually per location. By grouping items into stockkeeping units, items can be described and managed individually per location—including replenishment methods, safety stock, and costs.
<b>Stockkeeping units</b>	Handle inventory across multiple locations from one database to gain a complete, real-time business overview and create manageable cost and profit centers.
<b>Warehouse management system</b>	Help reduce costs through effective warehouse processes such as directed pick and put-away and automatic bin replenishment.
<b>Cycle counting</b>	Determine the counting frequency per item or stockkeeping unit to help increase inventory accuracy and meet shipping deadlines.
<b>Business notifications</b>	Generate e-mail messages to alert your people, suppliers, or partners to changes in critical inventory levels, order status, or replenishment needs.

For more information about Inventory Management in Microsoft Dynamics NAV, visit [www.microsoft.com/dynamics/nav](http://www.microsoft.com/dynamics/nav).